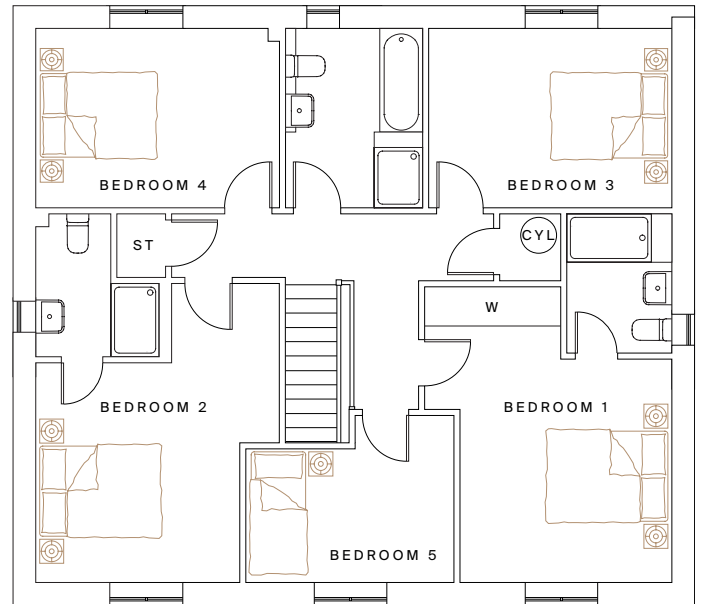
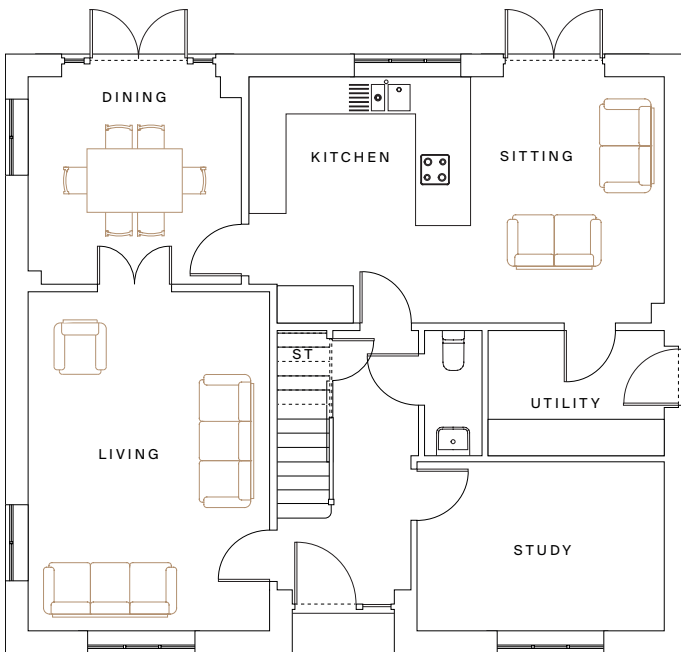


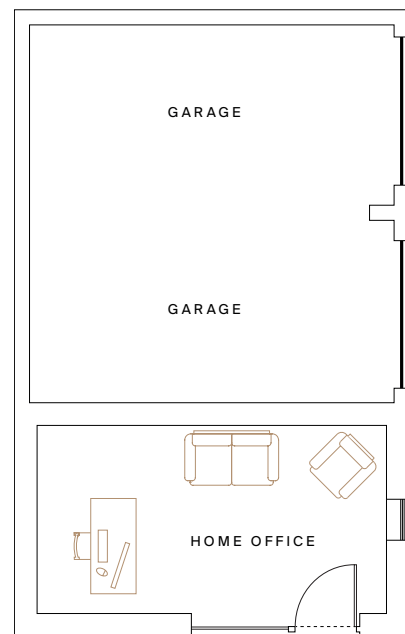
The Hoxton
5 bedroom home



first floor



ground floor



home office / garage (plot 14 layout)

Kitchen/sitting
6.89m x 4.10m (22'7" x 13'5")

Living
5.63m x 4.01m (18'6" x 13'2")

Dining
3.55m x 3.45m (11'8" x 11'4")

Study
4.12m x 2.82m (13'6" x 9'3")

Bedroom 1
4.92m x 3.53m (16'2" x 11'7")

Bedroom 2
4.92m x 3.40m (16'2" x 11'2")

Bedroom 3
4.05m x 3.00m (13'4" x 9'11")

Bedroom 4
4.05m x 3.00m (13'4" x 9'11")

Bedroom 5
3.46m x 2.80m (11'4" x 9'2")

Total area: 2066 sq ft

Garage allocation varies from plot to plot. Please ask your Sales Advisor for plot specific details.