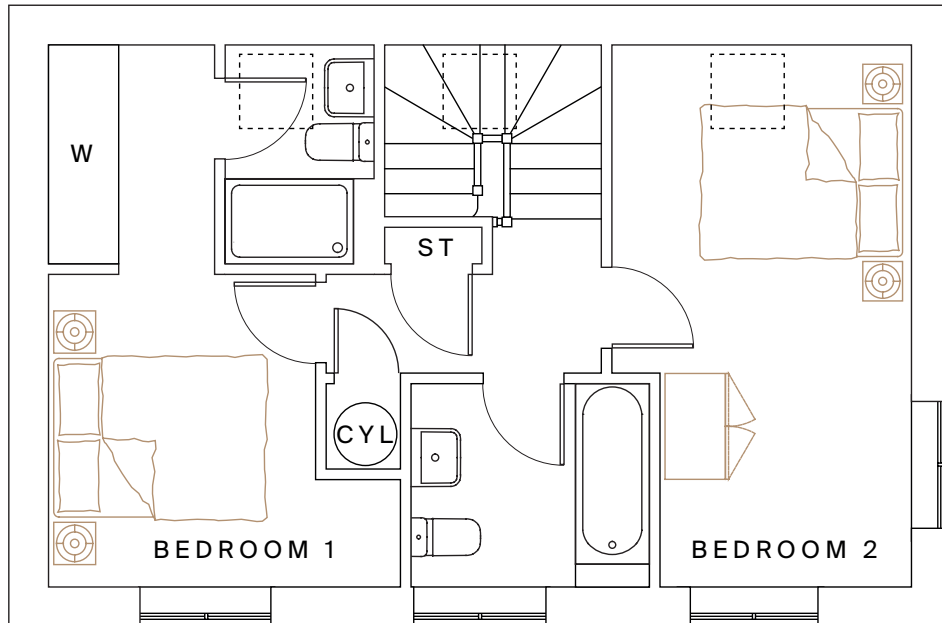
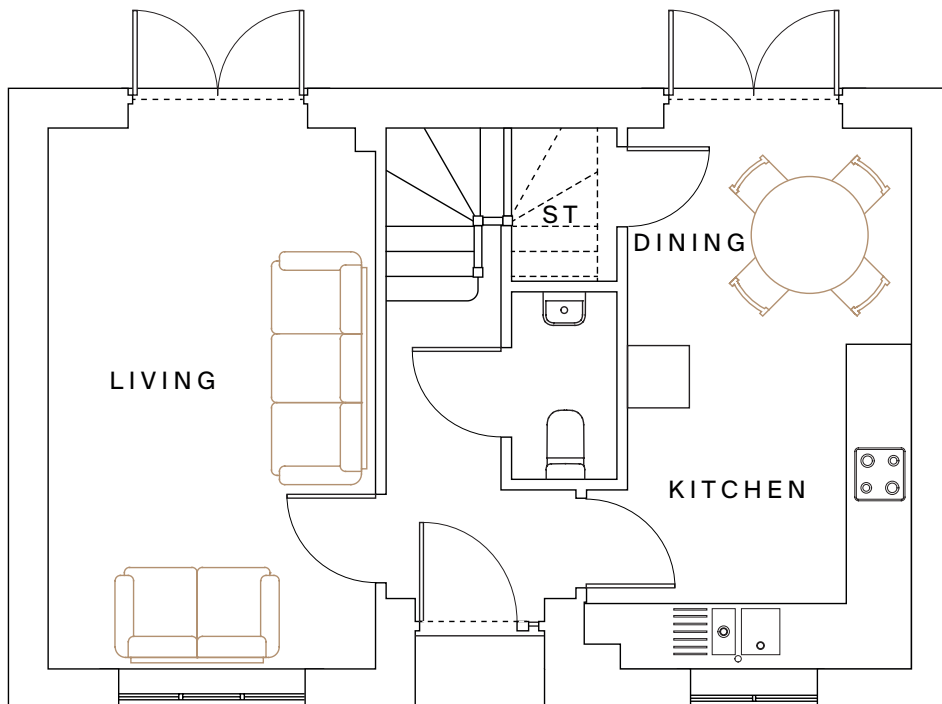


The Crofton
2 bedroom home

first floor



ground floor



Kitchen/dining
5.13m x 3.11m (16'10" x 10'2")

Bedroom 1
5.13m x 3.35m (16'10" x 11'9")

Bedroom 2
5.13m x 2.86m (16'10" x 9'6")

Living
5.13m x 3.10m (16'10" x 10'2")

Total area: 899 sq ft

Garage allocation varies from plot to plot. Please ask your Sales Advisor for plot specific details.

Please note, floorplans and dimensions are taken from architectural drawings and are for guidance only. Dimensions stated are within a tolerance of plus or minus 50mm. Overall dimensions are usually stated and there may be projections into these. Kitchen layouts are indicative only and may change. To confirm specific details on our homes please ask your Sales Advisor.